

# **SNAPSHOT OF THE EFFECTS OF RECENT FUNDING CUTS FOR PROGRAMS OF THE PENNSYLVANIA LEGAL AID NETWORK**

**JANUARY 2012**

The data presented below paint a picture of the steps taken by programs of the Pennsylvania Legal Aid Network to adjust to cuts in various funding sources they rely upon for support. The current fiscal year presents particular challenges. Some cuts that began several years ago had been partly offset by stimulus funding, but this year stimulus funding has nearly evaporated. The funding cuts have occurred in Legal Services Corporation funding, Commonwealth of Pennsylvania funding, stimulus funding, and various local sources of support. This fiscal year the Commonwealth initially cut state funding by 10% from that appropriated last year and a further 10% reduction was just announced. Federal LSC funding has been cut by nearly 15%, beginning this month. A summary of funding changes follows below. A survey of programs included the following key areas, with the following results. Overall, staffing was reduced by over 10% at the beginning of this fiscal year and now, staffing has been reduced by another 4.3%<sup>1</sup> due to the additional cuts occurring this fiscal year, for a 15% cut this fiscal year. Two offices have been closed. At the same time, staff benefits are also being cut and all programs are using net assets to balance budgets.

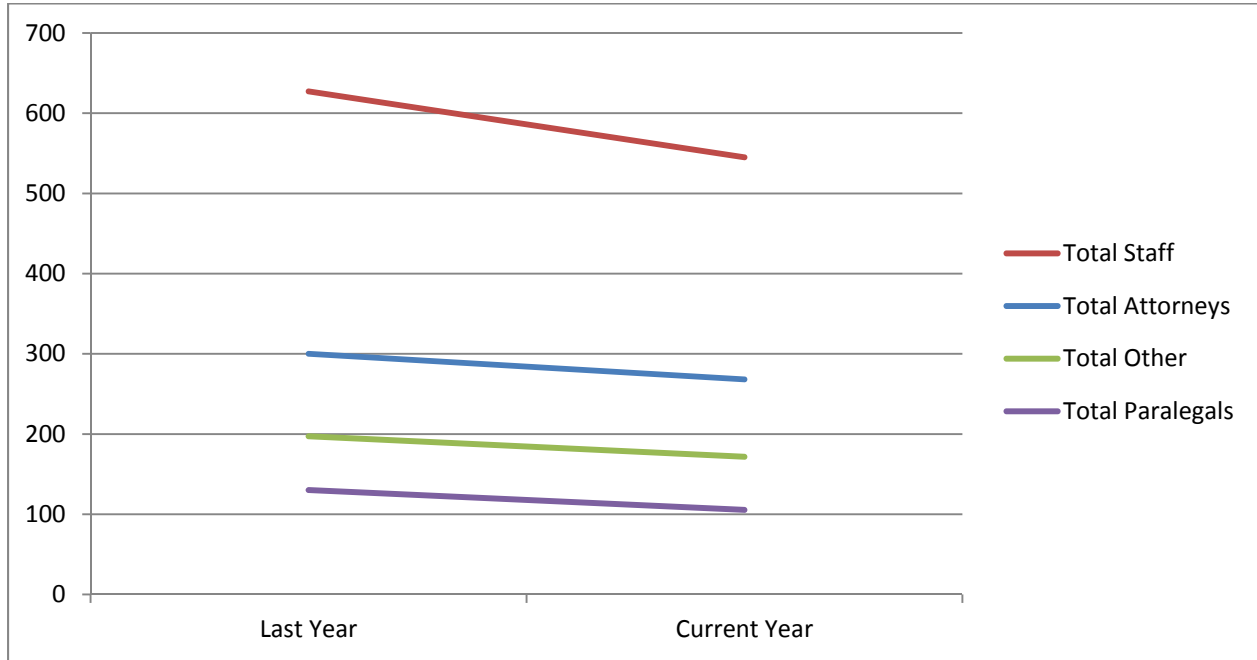
## **1. Changes in Staffing Levels:**

- a. Total Staffing 2010-11/2011-12: 627.2/545.1**
  - i. Attorney Staffing 2010-11/2011-12: 300/268.2**
  - ii. Paralegal Staffing 2010-11/2011-12: 130/105.36**
  - iii. Other Staffing 2010-11/2011-12: 197.2/171.54**
- 2. Are there Staff reductions in 2011-12? No – 1 Yes – 14**
- 3. Are Salary freezes now in effect? No – 5 Yes – 10 (two programs cut salaries)**
- 4. Are any offices closed? Yes, two offices**
- 5. Is the program using net assets this fiscal year? No – 0 Yes – 15**
- 6. Has the program reduced or suspended retirement contributions? No – 7 Yes – 8**

---

<sup>1</sup> The latest staffing reductions are ones that have already occurred or are planned for.

**PLAN DECLINE OF OVERALL STAFFING AND BY POSITION  
FY 2010-11 COMPARED TO FY 2011-12**



**PLAN CUTBACKS DUE TO REDUCED FUNDING**

